

B3 BENCHMARKING

advanced metrics for rating buildings

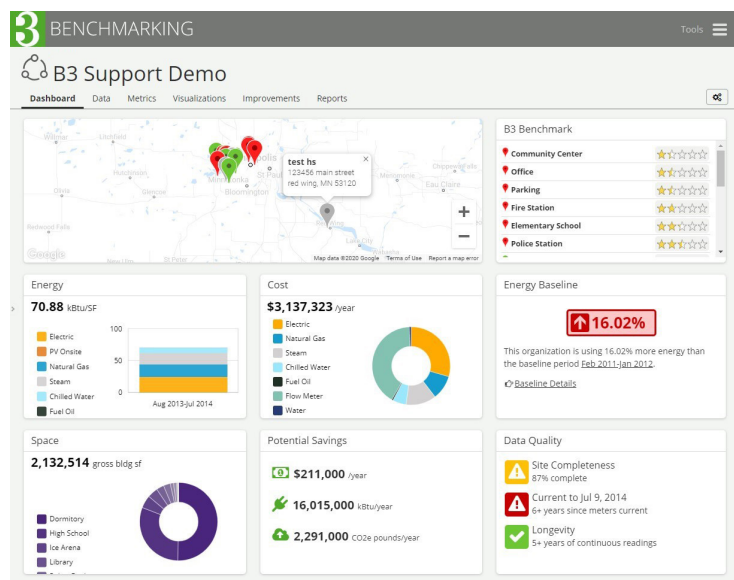
Energy costs account for the majority of your building's operational budget. Knowing how much energy your buildings consume isn't enough – you need to know how each building's actual energy performance **compares to relevant benchmarks**. Willdan developed B3 – Buildings, Benchmarks, and Beyond – to make it easier to manage building energy performance...and your energy budget.



Reliable, Relevant Data – Quickly and Easily

Whether you're managing one public building, a whole school district, or an entire state agency, you need to know how efficiently your buildings use energy so that you can prioritize deferred maintenance and energy improvement projects. B3 makes it easy for you to understand where the **greatest potentials for energy improvement** – and **maximum ROI** – are. Using monthly utility billing data and some basic information about your buildings, B3 creates simple reports so you can systematically:

- Monitor building energy performance against relevant benchmarks
- Determine the best candidates for improvement and investment
- Prioritize your projects
- Verify project effectiveness



“B3 allows us to track the energy and water consumption of our 70 buildings and identify the buildings that would benefit the most from efficiency improvements. We value how easy it is to visualize our data and export reports for further analysis.”

Angela Vreeland, PE
Facilities Department
Saint Paul Public Schools, MN

“We use B3 Benchmarking to pinpoint problem buildings and fix issues before they turn into large problems.”

Teri Thompson
City of Lake Crystal, MN

“Because of our B3 results, we are in the process of getting a recommissioning study since our City Hall facility is above its benchmark.”

Eric Gager
Building Maintenance Supervisor
City of Woodbury, MN

GREATER PERSPECTIVE, BIGGER ADVANTAGE

B3 uses complex analyses to show your building from four major perspectives, including and beyond ENERGY STAR. This multi-angle approach gives you the confidence that a poorly performing building is truly in need of improvement.

B3 Benchmark

An engineering model using DOE-2 simulations and B3 energy standards to compare your building's actual use to expected use.

B3 Peer Rating

A 1-100 rating evaluating a building to the B3 database of buildings with similar space usage and geographic location provides true peer comparison.

ENERGY STAR®

A simple 1-100 score produced by ENERGY STAR Portfolio Manager analyzes your building against similar buildings across the U.S.

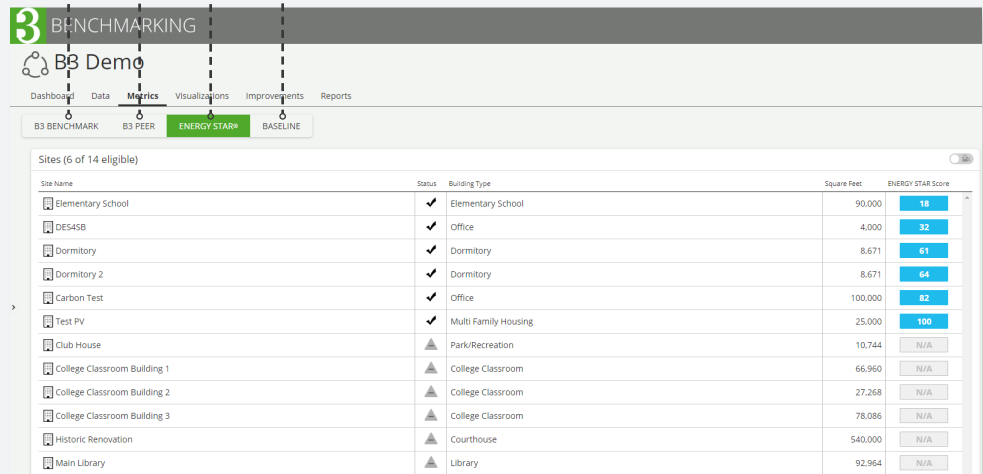
Baseline

A weather-normalized comparison of your building to itself over time provides monthly and annual analysis.

The Next Step

B3 benchmarks more building types and space usages than ENERGY STAR to help you not only measure consumption but also perform meaningful comparisons among buildings.

B3 integrates seamlessly with ENERGY STAR. Any building data entered or updated in B3 Benchmarking is pushed via an automated web service to ENERGY STAR Portfolio Manager. B3 is both the perfect companion to ENERGY STAR Portfolio Manager and the next logical step.



The screenshot shows the B3 Benchmarking software interface. At the top, there's a header with a green '3' logo and the word 'BENCHMARKING'. Below it, a navigation bar includes 'Dashboard', 'Data', 'Metrics', 'Visualizations', 'Improvements', and 'Reports'. The 'Metrics' tab is selected, and within it, the 'ENERGY STAR®' sub-tab is active. The main content area displays a table titled 'Sites (6 of 14 eligible)'. The table has columns for 'Site Name', 'Status', 'Building Type', 'Square Feet', and 'ENERGY STAR Score'. The first six rows show buildings with scores: 18, 32, 61, 64, 82, and 100. The remaining eight rows show buildings with 'N/A' scores.

Site Name	Status	Building Type	Square Feet	ENERGY STAR Score
Elementary School	✓	Elementary School	90,000	18
DES45B	✓	Office	4,000	32
Dormitory	✓	Dormitory	8,671	61
Dormitory 2	✓	Dormitory	8,671	64
Carbon Test	✓	Office	100,000	82
Test PV	✓	Multi Family Housing	25,000	100
Club House	▲	Park/Recreation	10,744	N/A
College Classroom Building 1	▲	College Classroom	66,960	N/A
College Classroom Building 2	▲	College Classroom	27,268	N/A
College Classroom Building 3	▲	College Classroom	78,086	N/A
Historic Renovation	▲	Courthouse	540,000	N/A
Main Library	▲	Library	92,964	N/A

The Proof Is in the Numbers

For more than two decades, Willdan has developed B3 Benchmarking into one of today's most robust tools for tracking and managing energy use in buildings. Currently, the MN B3 Benchmarking program contains over 11,000 public buildings with over 370 million square feet, representing 31 State agencies, 683 cities, 67 counties, 58 higher education campuses, and 279 school districts. B3 Benchmarking has identified over \$450 million in potential annual energy savings.

Nationwide, the B3 Benchmarking system contains almost 50,000 buildings representing over 2.4 billion square feet and has identified over \$1 billion in potential annual energy savings.

Get started today!

No-cost benchmarking for MN public buildings.

📞 952-939-1878

✉ info@b3benchmarking.com

