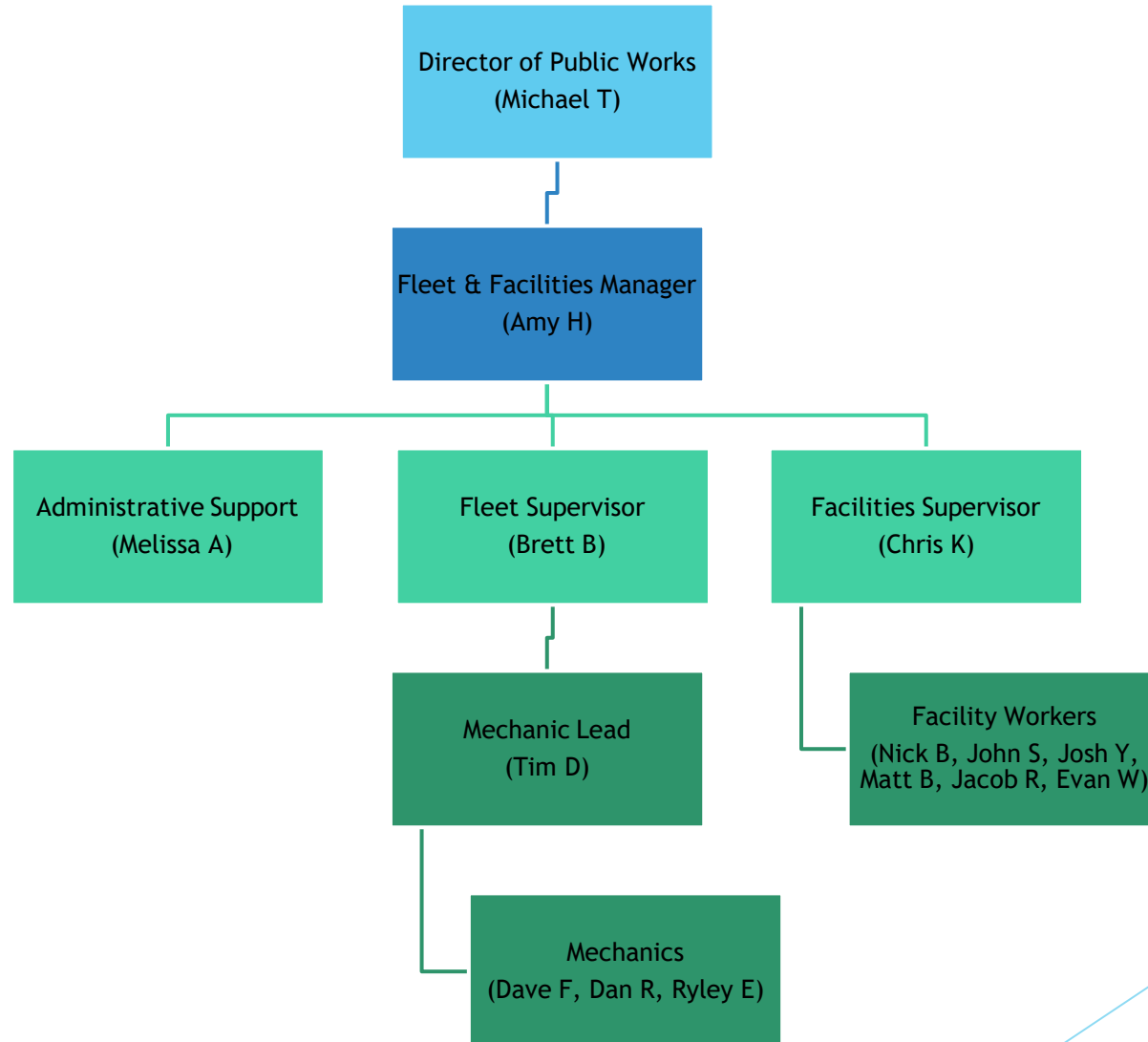
The background features abstract, overlapping geometric shapes in various shades of blue, ranging from light sky blue to deep navy blue. These shapes are primarily located on the left and right sides of the slide, framing the central text area.

# City of Plymouth Facilities

Organizational Structure

# Fleet and Facilities Organizational Structure





# What has changed since 2022?

- ▶ Plymouth Community Center
  - ▶ Original building was 20,000 sq ft
  - ▶ Expansion and Remodel total to 110,000 sq ft
    - ▶ 2 boiler plants
    - ▶ 1 domestic water plant
    - ▶ Full building automation
      - ▶ HVAC
      - ▶ Light control
      - ▶ Door Access
  - ▶ Experience of high volume of users
- ▶ Fire Station 2 and 3 Construction
  - ▶ Full-time living quarters
  - ▶ Expanded training tower
  - ▶ Smoke training facility



# Maintenance Technician Alignment

City Hall  
Public Safety  
Plymouth Community Center  
Fire Station 2  
Fire Station 3  
Zachary Water Treatment Plant  
John

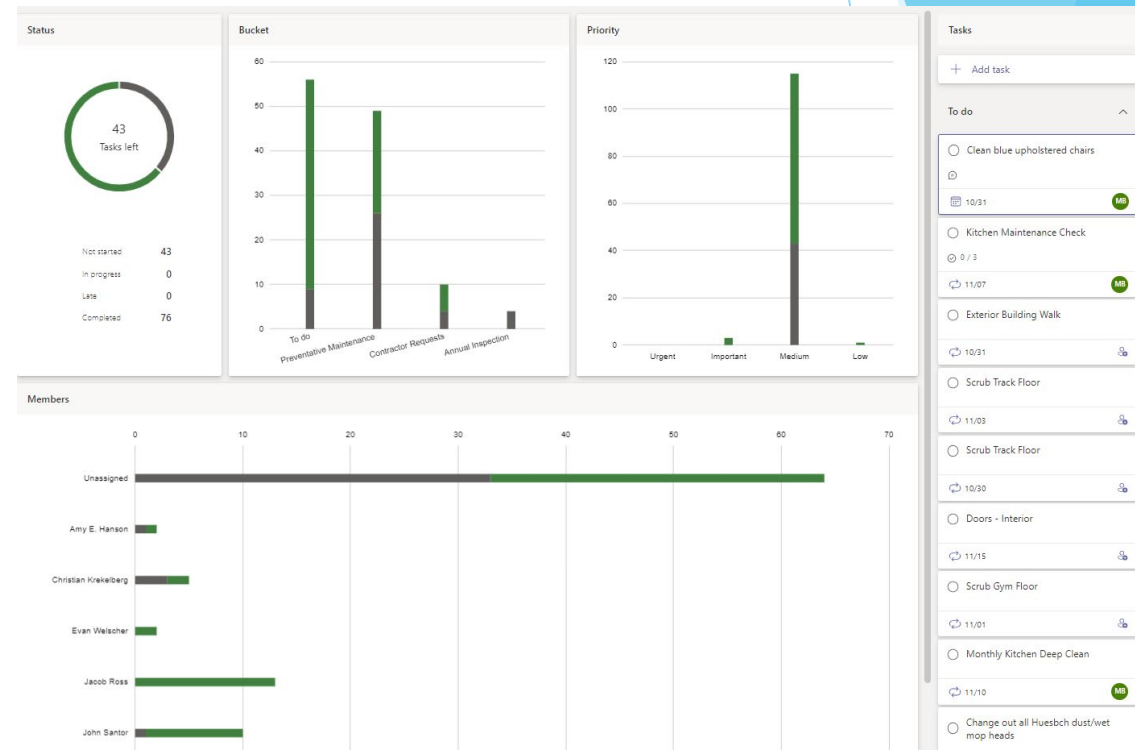
Maintenance Facility  
Central Water Treatment Plant  
Reservoir  
Station 73/ Park and Ride  
Fire Station 1  
Reserve (Transit Station)  
Nick

Plymouth Community Center

Josh  
Evan  
Matt  
Jacob

# Preventative Maintenance Process

- ▶ Utilization of Cartegraph
  - ▶ Tracks lifecycle of large assets
    - ▶ Mechanical
    - ▶ Building Envelop
- ▶ Assign work based off expertise
- ▶ Day to day Operations
  - ▶ Utilize Teams and Microsoft Planner
    - ▶ Helps with low level workflow
    - ▶ Easy access for staff



# Strategic Planning for the future

- ▶ In-house Mechanical program
  - ▶ Saves on contractual services
  - ▶ Supports Enterprise funds
  - ▶ 2024 approved tech
- ▶ Continued Automation
  - ▶ Lighting control
  - ▶ AV control
  - ▶ Building automation

