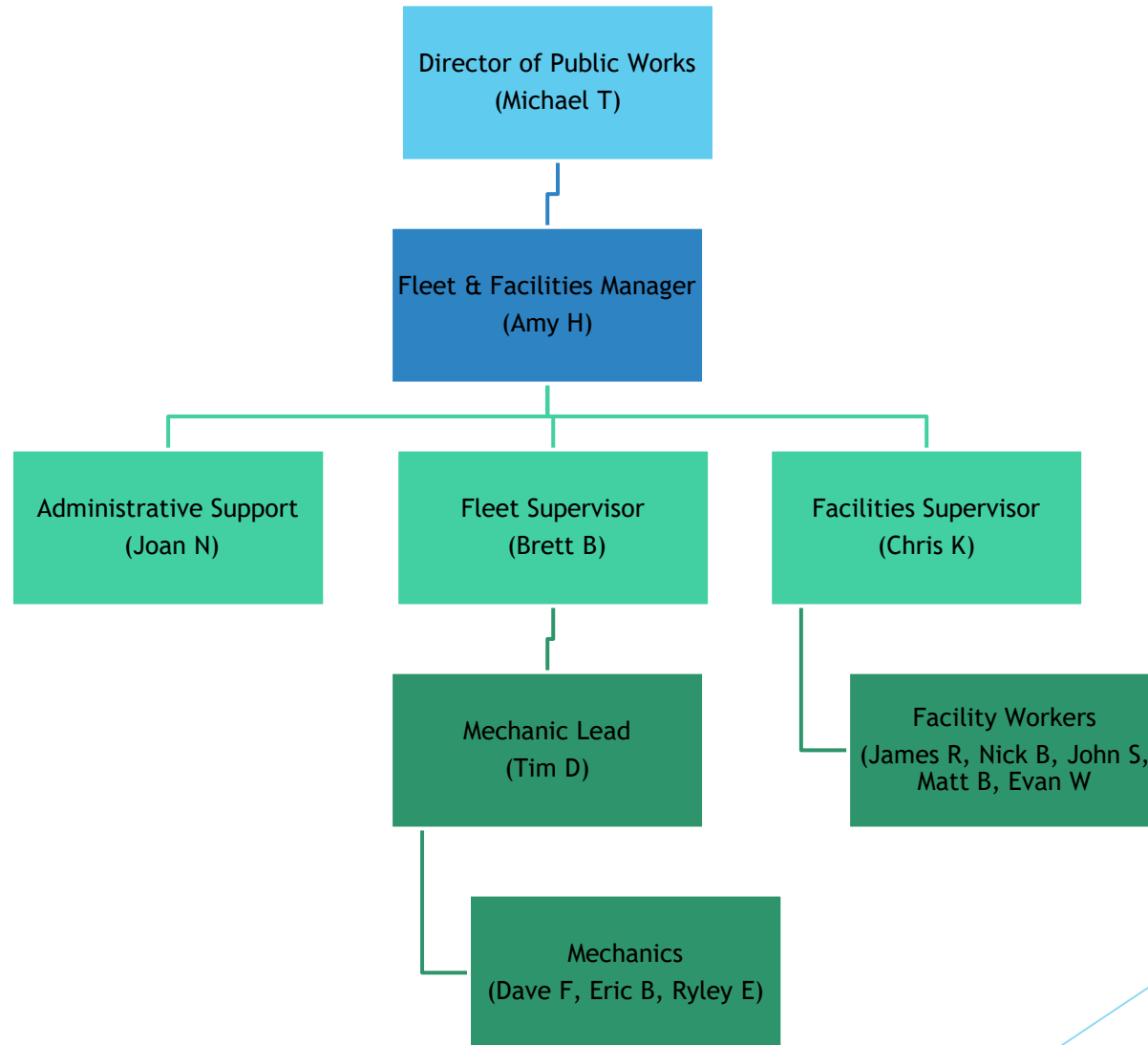
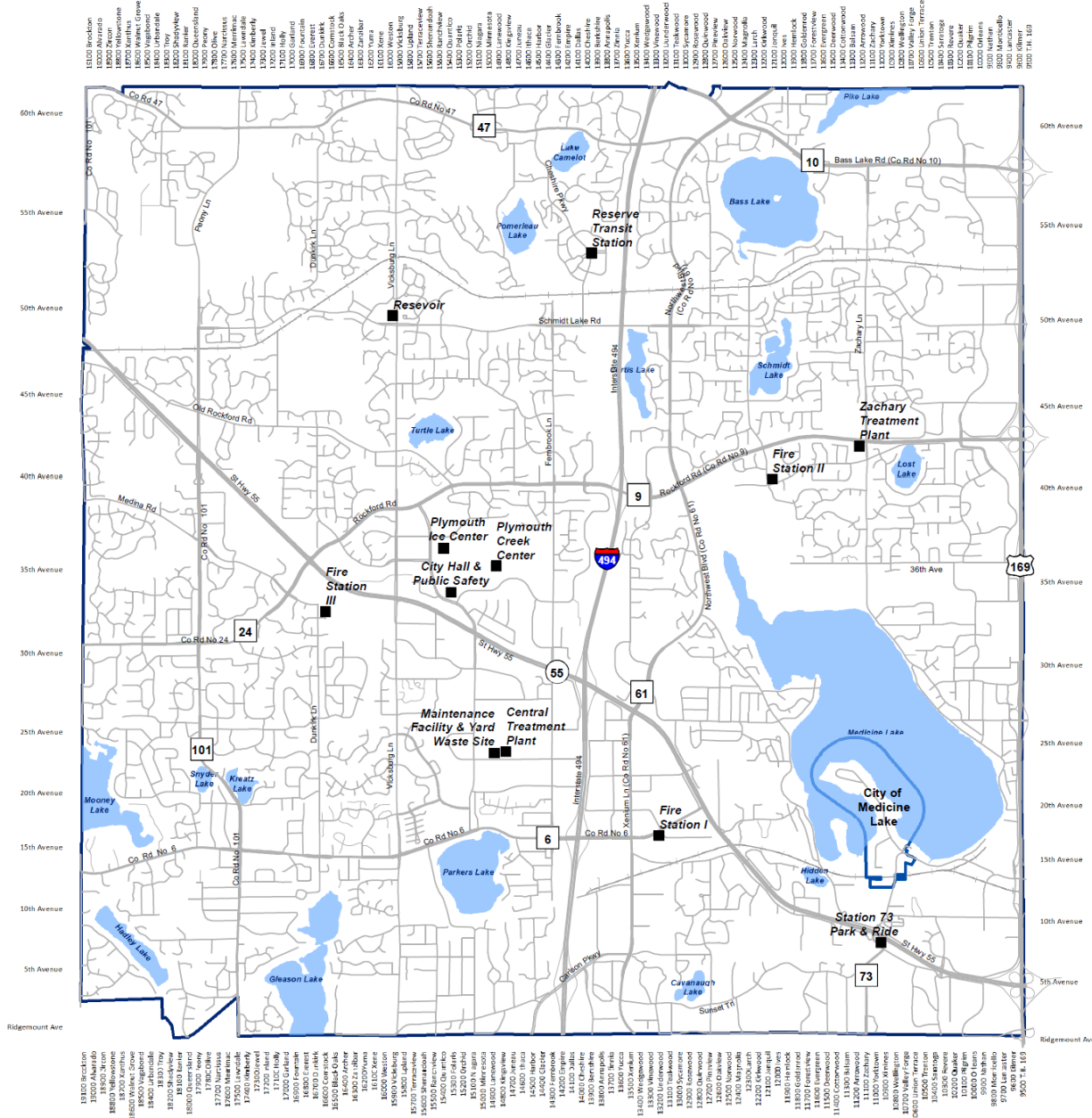
The background features abstract, overlapping geometric shapes in various shades of blue, ranging from light sky blue to deep navy blue. These shapes are primarily located on the left and right sides of the page, framing the central white area.

City of Plymouth Facilities

Organizational Structure

Fleet and Facilities Organizational Structure





City of Plymouth Facilities

Central Treatment Plant	14800 23rd Ave N
City Hall & Public Safety	3400 Plymouth Blvd
Fire Station 1	13205 Co Rd 6
Fire Station 2	12000 Old Rockford Rd
Fire Station 3	3300 Dunkirk Ln N
Maintenance Facility & Yard Waste Site	14900 23rd Ave N
Plymouth Creek Center	14800 34th Ave N
Plymouth Ice Center	3650 Plymouth Blvd
Reserve Transit Station	5300 Cheshire Pkwy
Reservoir	5025 Vicksburg Ln N
Station 73 Park & Ride	Highway 55 & Co Rd 73
Zachary Treatment Plant	4295 Zachary Ln N



THIS REPRESENTS A COMPILATION OF INFORMATION AND DATA FROM CITY, COUNTY, STATE AND OTHER SOURCES THAT HAS NOT BEEN FIELD VERIFIED. INFORMATION SHOULD BE FIELD VERIFIED AND COMPARED WITH ORIGINAL SOURCE DOCUMENTS.

Maintenance Technician Alignment

City Hall
Public Safety
Fire Station 2
Fire Station 3
Zachary Water Treatment Plant

James

Maintenance Facility
Central Water Treatment Plant
Reservoir
Station 73/ Park and Ride
Fire Station 1
Reserve (Transit Station)

Nick

Plymouth Community Center

John
Evan
Matt